

Specifications

General	TC-265	TC-365	Transmitter	TC-265	TC-365
Frequency range	146~174MHz	440~470MHz	Carrier output power	5W /1W	4W/1W
Channel capacity	16(15+s)		FM Modulation	16K Φ F3E/11K Φ F3E	
Channel spacing	25KHz / 12.5KHz		Spurious and harmonics	≤-36dBm	
Power supply	7.5V/DC		Audio distortion (300-3000Hz)	< -45dB / < -40dB	
Antenna impedance	50 ohms		Frequency stability (-30°C to +60°C)	< 5%	
Operating temperature range	-30°C to 60°C		Max. frequency deviation	±2.5ppm	
PLL step	5kHz, 6.25kHz		Adjacent channel power	±5KHz / ±2.5KHz	
Dimensions	58(W) x 126(H) x 37.5(D)mm				
Weight(Net)	200g without battery and antenna 400g with battery and antenna				

Receiver	TC-265	TC-365
Sensitivity(12dB/20dB SINAD)	0.25μV / 0.35μV	
Adjacent channel selectivity	70 dB(wide)/60dB(narrow)	
Intermodulation rejection	65dB	
Spurious response rejection	70 dB	
Audio power output	500mW	
Audio distortion	3%	

Measurement made in accordance with EIA/TIA-603
Above specifications are subject to change without notice due to technology enhancement

Applicable MIL-SPEC 810C/D/E

Standard	MIL 810C Methods / Procedures	MIL 810D Methods / Procedures	MIL 810E Methods / Procedures
Low Pressure	500.1/ Procedure I	500.2/ Procedure I,II	500.3/ Procedure I,II
High Temperature	501.1/ Procedure I,II	501.2/ Procedure I,II	501.3/ Procedure I
Low Temperature	502.1/ Procedure I	502.2/ Procedure I,II	502.3/ Procedure I,II
Temperature Shock	503.1/ Procedure I	503.2/ Procedure I	503.3/ Procedure I
Solar Radiation	505.1/ Procedure I	505.2/ Procedure I	505.3/ Procedure I
Rain	506.1/ Procedure I,II	506.2/ Procedure I,II	506.3/ Procedure I,II
Humidity	507.1/ Procedure II	507.2/ Procedure II,III	507.3/ Procedure II,III
Salt Fog	509.1/ Procedure I	509.2/ Procedure I	509.3/ Procedure I
Dust	510.1/ Procedure I	510.2/ Procedure I	510.3/ Procedure I
Vibration	514.2/ Procedure VIII,X	514.3/ Procedure I	514.4/ Procedure I
Shock	516.2/ Procedure I,II,V	516.3/ Procedure I,IV	516.4/ Procedure I,IV



Your Local Dealers:

Shenzhen HYT Science & Technology Co., Ltd.

Http://www.hyt.com.cn

HYT® is the registered trademark of Shenzhen HYT Science & Technology Co., Ltd.

© 2004 HYT,Co.,Ltd. All Rights Reserved.

HYT retains right to change the product design and specification. Should any printing mistake occur, HYT doesn't bear relevant responsibility. Little difference between real product and product indicated by printing materials will occur by printing reason.

HYT

Professional Two Way Radio

TC-265/365



HYT

TC-265/365

Professional Radio



Professional Two-way Radio

TC-265/365 radios comply with ergonomics, have very good handle feel and high waterproof performance, rugged and reliable.

With its perfect sound quality, long communication range (open area: 6KM) and high performance, TC-265/365 radios have won CE Approval.



Main Feature

MIL-STD-810C/D/E and IP54

The TC-265/365 are manufactured along HYT's demanding technical and industrial standards, meeting or exceeding the tough Military Standards.

CDCSS / CTCSS

It enables users only hear calls for their own group for clearer, improved communications.

Selectable 2 or 5-Tone Encoder/Decoder

The radio is equipped with 2 or 5 -Tone encoding/decoding capability. Customers can choose the signaling according to their situation. Incoming messages are indicated via both audible and visible (LED) alerts.

Channel Scanning

Turn channel selector knob, the radio will automatically enable channel scanning feature and detect all the channels. When any activity is detected on one channel, the radio will stop on the active channel for communications.

Nuisance Delete

This feature allows you to delete nuisance channels from scan list.

Monitor

Press MONI key to enter monitor mode and monitor the current channel for activity. This feature is used to receive weak signals.

Selectable Channel Spacing

You can set channel spacing of the radio as 25KHz or 12.5KHz through programming software.

Busy Channel Lockout

Avoid interference with the users using the same channel by preventing transmission if another talk group is already on the air.

Aluminum Chassis, Rugged and Durable

High Capacity 1100mAh Battery (1500mAh available)

Rapid Charger, 2 hours' charging time

Transmit & Receive

To transmit, press and hold PTT, speak into the microphone with normal voice. To receive, release PTT.

Time-out Timer (TOT)

If the transmission exceeds preset time, transmission will be stopped. This feature is used to prevent one from using the same channel for a long time.

Battery Save

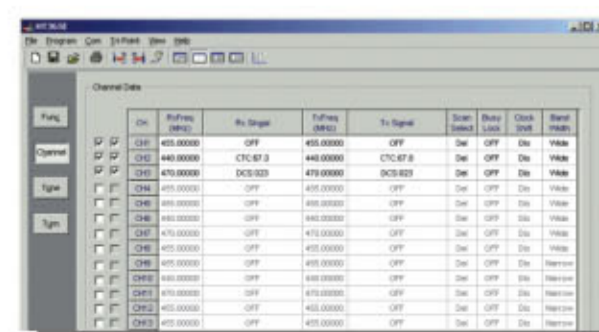
This function minimizes the amount of power used when no signal is being received and no operation is being performed (no key is being pressed, and no switch is being turned).

Wired Clone

This feature copies radio data from one radio to another by means of clone cable.

PC Programming And Tuning

Connect the radio with a PC via interface cable to make settings and programme radio parameters without having to open the radio to save both time and expense. Function settings and frequencies can be rapidly and accurately programmed.



Selectable Squelch Level

You can select squelch level from level 1 to level 9.

MOSFET Final-Stage Power Amplifier

The radio equipped with this feature can provide higher power and higher efficiency.

Clock Frequency Shift

This feature is used to avoid interference of main frequency with the radio performance.

Optional Accessories



TC-265/365